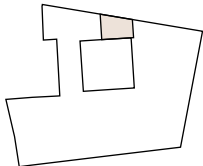


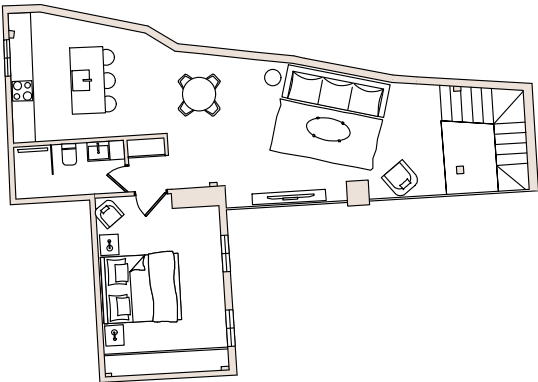
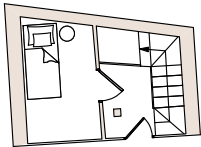
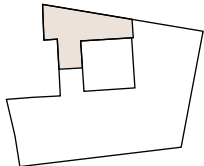
# PONT I VIC

ANNO MDXXXI

Ground Floor



First Floor



# Apartment 1

Built area: 96m<sup>2</sup>



- 2 bedrooms
- 1 bathroom
- Private entrance from courtyard
- 40m<sup>2</sup> open-plan kitchen and living room
- Impressive steel windows inside restored original stone arches

