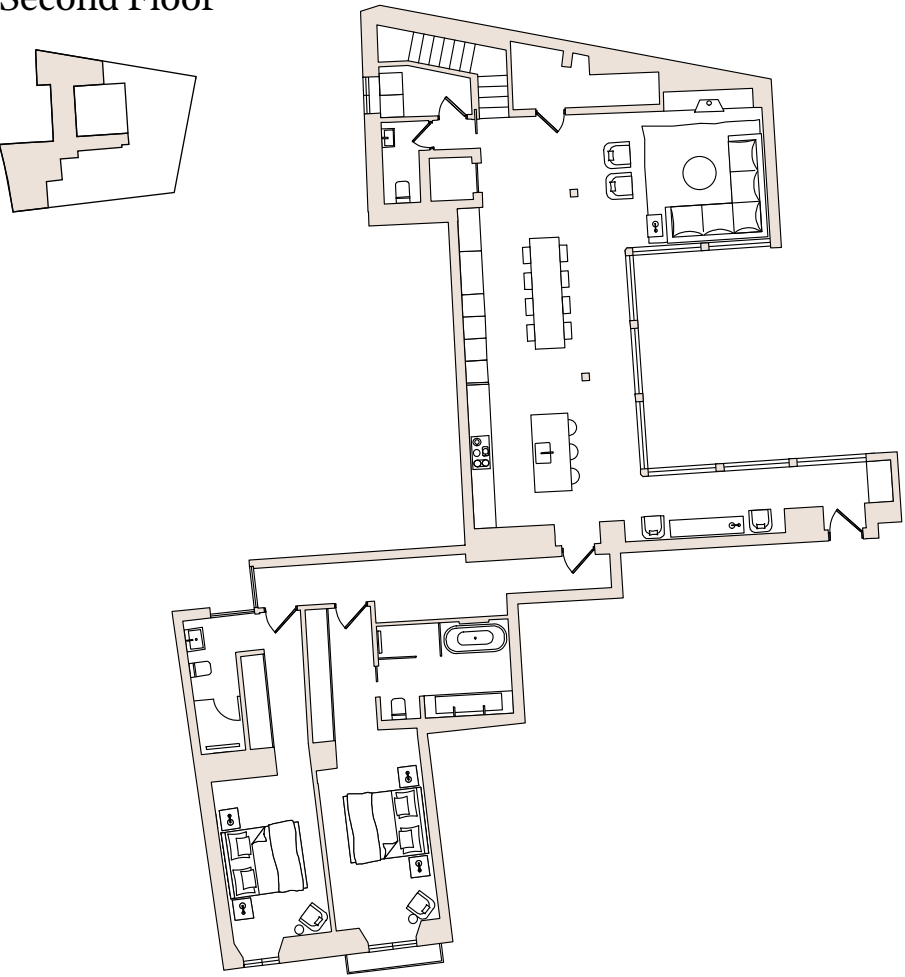


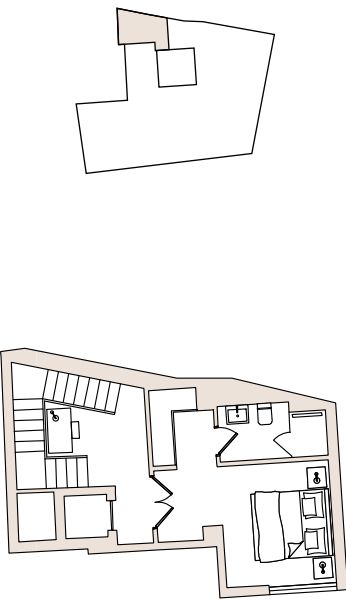
PONT I VIC

ANNO MDXXXI

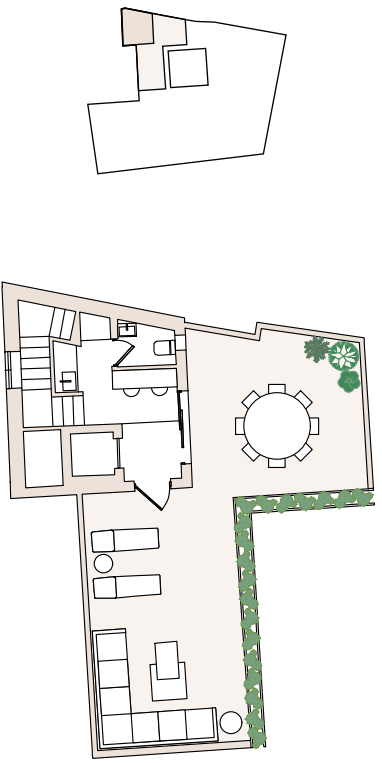
Second Floor



Third Floor



Fourth Floor



Penthouse 1

Built area: 274m² Terrace: 50m²



- 3 bedrooms with en-suite bathrooms
- 2 powder rooms
- 64m² open-plan kitchen & living room
- Living areas facing courtyard
- 3.25m high ceiling in living areas
- 50m² private roof terrace with cathedral view

