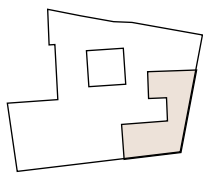


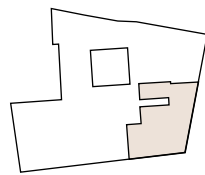
# PONT I VIC

ANNO MDXXXI

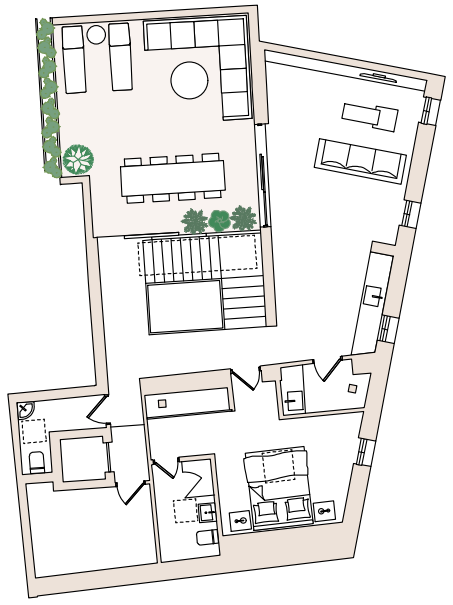
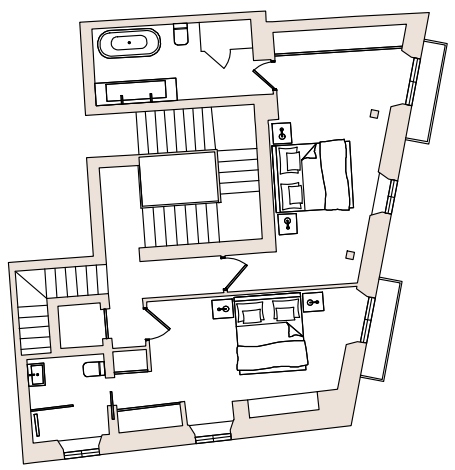
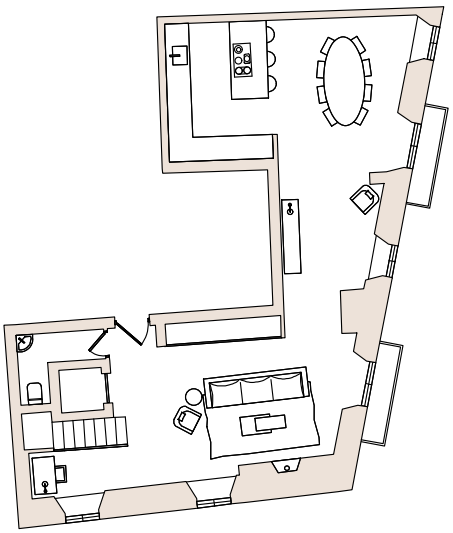
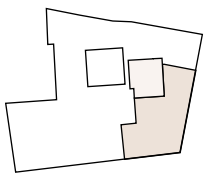
Second Floor



Third Floor



Fourth Floor



## Penthouse 4

Built area: 289m<sup>2</sup> Terrace: 49m<sup>2</sup>



- 3 bedrooms with en-suite bathrooms
- Powder room
- 65m<sup>2</sup> open-plan kitchen & living room
- Street facing rooms with balconies
- 3.25m high ceiling in living areas
- Loft room can be turned into 4th bedroom
- 49m<sup>2</sup> private roof terrace including upper terrace with panoramic sea and cathedral views

