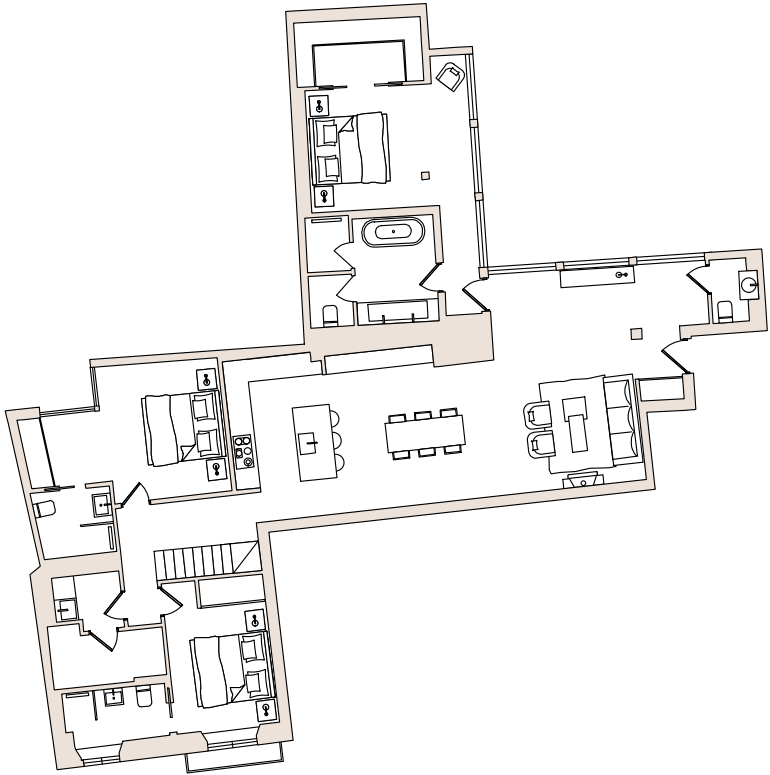
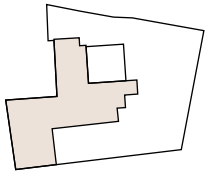


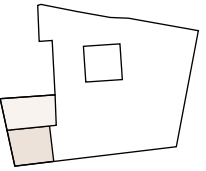
# PONT I VIC

ANNO MDXXXI

Third Floor



Fourth Floor



## Penthouse 5

Built area: 216m<sup>2</sup> Terrace: 38m<sup>2</sup>



- 3 bedrooms with en-suite bathrooms
- Powder room
- 59m<sup>2</sup> open-plan kitchen & living room
- Lateral apartment
- 2.7m high ceiling in living areas
- Loft room can be turned into 4th bedroom
- 38m<sup>2</sup> private roof with cathedral view

