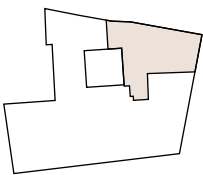


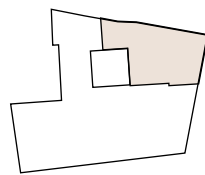
PONT I VIC

ANNO MDXXXI

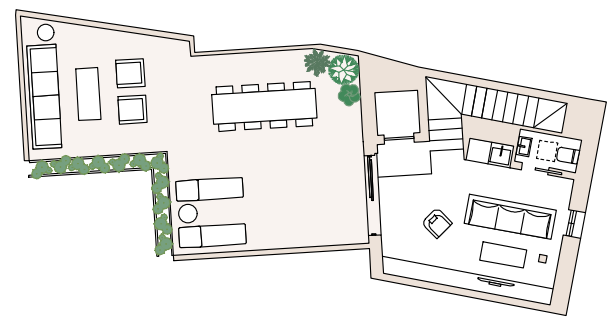
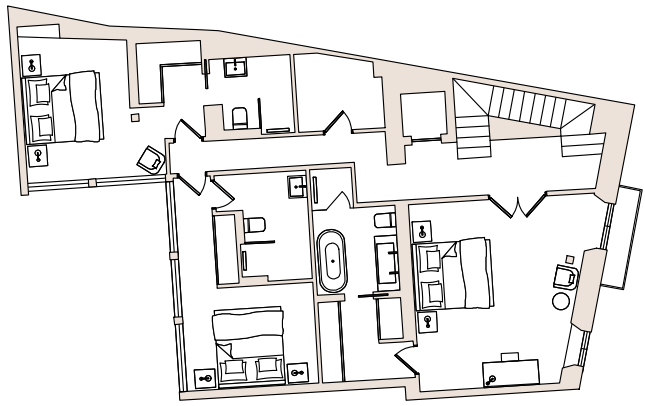
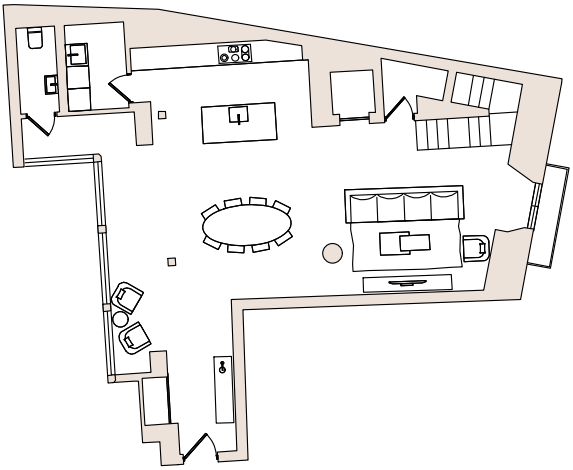
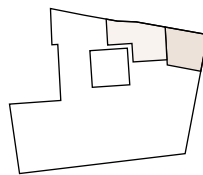
Second Floor



Third Floor



Fourth Floor



Penthouse 3

Built area: 268m² Terrace: 42m²



- 3 bedrooms with en-suite bathrooms
- Powder room
- 67m² open-plan kitchen & living room
- Living area facing both courtyard and street
- 3.20m high ceiling in living areas
- Loft room can be turned into 4th bedroom
- 42m² private roof terrace with cathedral view