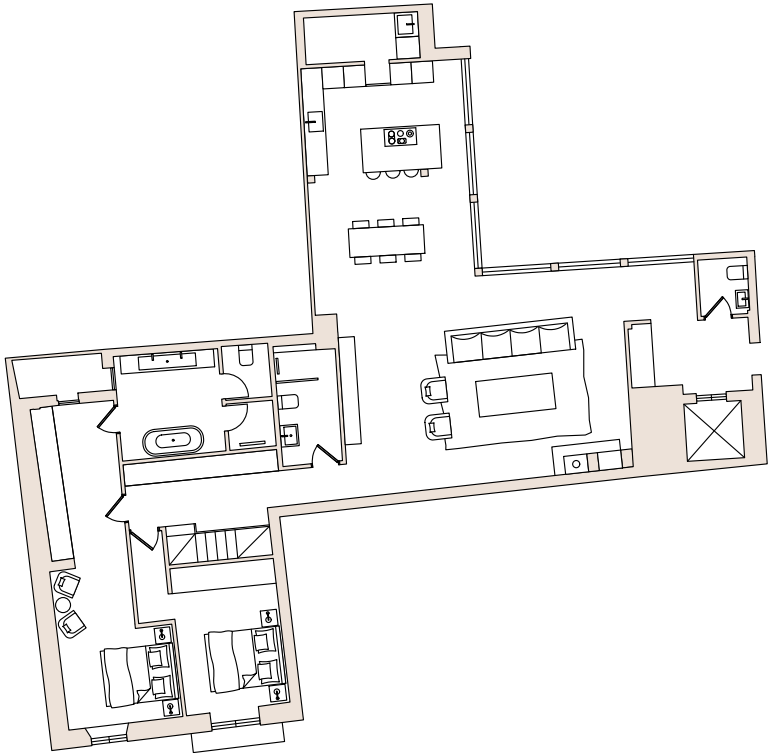
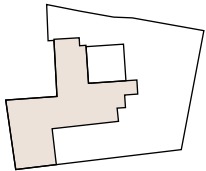


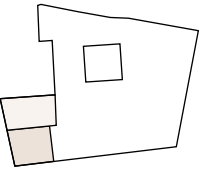
PONT I VIC

ANNO MDXXXI

Third Floor



Fourth Floor



Penthouse 5

Built area: 216m² Terrace: 38m²



- 2 bedrooms with en-suite bathrooms
- 2 Powder room
- 73m² open-plan kitchen & living room
- Lateral apartment
- Loft room can be turned into 4th bedroom
- 38m² private roof with cathedral view

